



Software

# Dell SonicWALL E-Class product lines

## Dell SonicWALL E-Class Series

Dell™ SonicWALL™ E-Class represents a new generation of comprehensive solutions for network security, secure remote access, email security, and policy and management. Engineered to deliver solutions that are intelligent enough to adapt as organizations evolve and as threats evolve—dynamically and globally. Delivering sophistication and broad scalability, E-Class solutions automatically anticipate and adapt to emerging threats, securing any user, device or application from anywhere, with maximum ease of deployment, and at the best economic value in a compliant framework.

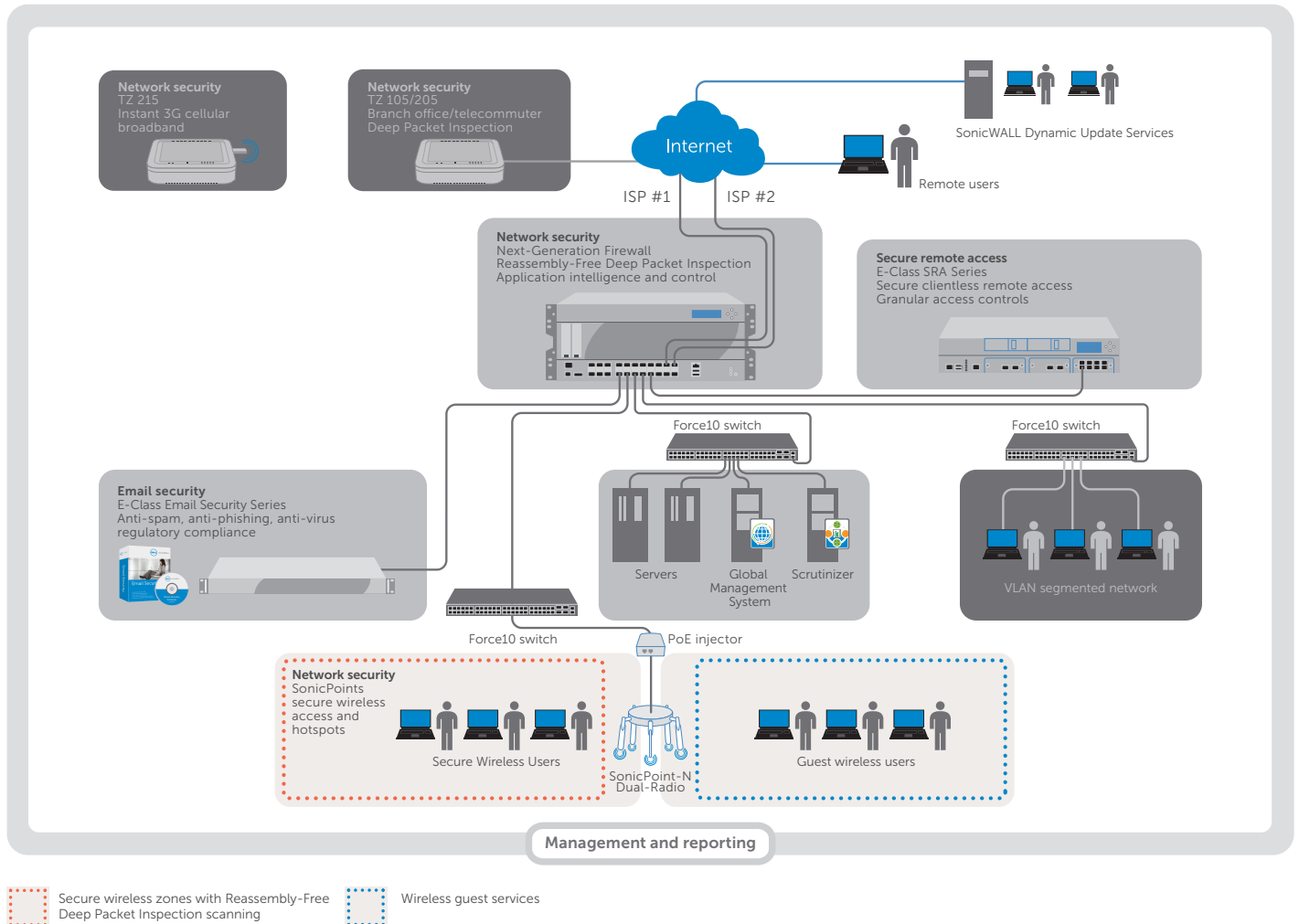
### Dell SonicWALL E-Class includes:

- Dell SonicWALL SuperMassive™ Series
- Dell SonicWALL E-Class Network Security Appliance (NSA) Series
- Dell SonicWALL Aventail™ E-Class Secure Remote Access (SRA) Series
- Dell SonicWALL E-Class Email Security sSeries
- Dell SonicWALL Global Management System (GMS®)
- Dell SonicWALL Scrutinizer

## The evolution of enterprise network security

Enterprise organizations must balance business opportunities with risk management. Trends like cloud computing, Web 2.0, virtualization and mobility can optimize productivity and maximize return on investment (ROI). Yet, as the network perimeter becomes more fluid, these trends also expose networks to sophisticated threats and time-wasting web applications. Traditional point products suffer from cumbersome integration, ineffective scanning, false positives, limited control and lower performance. An effective solution should tighten security and control of applications and their delivery to the end user.

### Dell SonicWALL protected network



## The E-Class alternative: defend, control and manage

Enterprise IT's new challenge is to deliver security that is capable of dynamically adapting to continuously shifting threats or easily adjusting to new technologies or business demands. By focusing

technology investment on easy, yet adaptable, solutions that **defend, control** and **manage** enterprise-class networks, E-Class solutions deliver dynamic protection and granular application control with lower administrative overhead, for a greater overall return.

### Defend

#### Challenge

- Profit-driven, sophisticated attacks that target newly found vulnerabilities
- Potential security vulnerabilities in un-managed remote and mobile endpoint devices
- Inbound and outbound email threats and content liability exposure

#### Dell SonicWALL E-Class Solution

- SuperMassive E10000 Series, SuperMassive 9000 Series and E-Class NSA Series combines Next-Generation Firewall capabilities with real-time deep packet inspection to deliver superior intrusion prevention, malware protection, application intelligence, control and real-time visualization, and inspection for SSL encrypted sessions
- E-Class SRA interrogates remote and mobile endpoint devices to enforce security requirements before authorizing accesses to resources
- E-Class Email Security protects against spam, viruses, phishing attacks and unauthorized content

### Control

#### Challenge

- The majority of bandwidth is consumed by the minority of users
- Inappropriate Internet use that drains productivity and introduces threats
- Data leakage that creates substantial liabilities and financial implications
- Collaborative and mobile access from an expanding range of users, devices and locations
- Support demand for varied forms of user- and department-specific email-based communications

#### Dell SonicWALL E-Class Solution

- SuperMassive Series and E-Class NSA Series employ scalable multi-core processors in conjunction with the Dell SonicWALL Reassembly-Free Deep Packet Inspection® engine, to provide application level bandwidth management for networks of any size. Application intelligence and control allows administrators to create tailored powerful application usage and bandwidth allocation policies.
- Dell SonicWALL Content Filtering Service on the SuperMassive Series and E-Class NSA Series prevents inappropriate Internet use and blocks malicious web sites
- E-Class Email Security stops outbound email leaks of confidential information
- E-Class SRA applies granular policy control over all leading platforms from all leading remote and mobile devices, including smartphones and tablets
- E-Class Email Security provides extensive and granular end-user capabilities while retaining complete IT control over email

### Manage

#### Challenge

- Increasing business dependence on technology and real-time access to information
- Networks expanding over a wider array of technology platforms and geographic locations
- Flexible deployment options
- Meeting and approving regulatory compliance
- Overwhelmed IT resources that could otherwise be applied to more pressing needs

#### Dell SonicWALL E-Class Solution

- GMS can centrally configure and manage thousands of Dell SonicWALL network security, backup and recovery, email security, and secure remote access appliances
- Scrutinizer reporting leverages application traffic analytics exported by Dell SonicWALL and third-party appliances to visualize traffic and troubleshoot complex issues.
- GMS and Scrutinizer reporting delivers real-time and trend analysis for business and compliance needs
- GMS is deployable as hardware, software or virtual appliance, for greater scalability
- GMS compliance reporting provides administrators the ability to generate reports to fulfill compliance requirements
- E-Class solutions are backed by Dell SonicWALL's 24x7 enterprise-class support staff and Dell SonicWALL's GRID Network for the collaborative gathering and sharing of threat and application data



## Enterprise-class network security

The Dell SonicWALL SuperMassive and E-Class Network Security Appliance (NSA) Series Next-Generation Firewalls offer Reassembly-Free Deep Packet Inspection (RFDPI) protection and intrusion prevention, along with application intelligence and control that will not slow down network throughput.

**SuperMassive E10800, E10400 and E10200** Next-Generation Firewalls deliver scalability, reliability and deep security at multi-gigabit speeds. Built to meet the needs of enterprise, government, university, carriers and service provider deployments, the SuperMassive E10000 Series is ideal for securing large enterprise networks, data centers and server farms. Combining its massively multi-core architecture with Dell SonicWALL's Reassembly-Free Deep Packet Inspection technology, the SuperMassive E10000 Series delivers industry-leading application control, intrusion prevention, malware protection and SSL inspection at multi-gigabit speeds.

**SuperMassive 9600, 9400 and 9200** Next-Generation Firewalls bring that same high level of protection and performance to the enterprise in a highly efficient and massively scalable solution. Designed for scalability, reliability and deep security at multi-gigabit speeds, the SuperMassive 9000 Series offers ultimate security with uncompromising performance, to safely harness the power of mobility and BYOD initiatives, while intelligently managing precious bandwidth.



**E-Class NSA E8510, NSA E8500, E6500 and E5500** Next-Generation Firewalls are engineered to be the most scalable, high-performance and reliable firewalls in their class, protecting organizations against a vast spectrum of network attacks at unprecedented speed. The E-Class NSA Series delivers intrusion prevention, anti-malware, and application intelligence, control and visualization featuring an extensive array of advanced networking and configuration options that integrate seamlessly into high-performance network environments. The Dell SonicWALL Reassembly-Free Deep Packet Inspection engine detects over 4,500 applications and millions of pieces of malware to protect the network automatically and seamlessly, while inspecting hundreds of thousands of simultaneous connections, with no file size limits and near zero added latency. Dell SonicWALL Application Intelligence, Control and Visualization provides granular control and real-time visualization of applications to guarantee bandwidth prioritization and ensure maximum network security and productivity.



## Enterprise-class secure remote access

Dell SonicWALL Aventail E-Class Secure Remote Access SSL VPNs offer the mobile workforce access to key applications and resources from anywhere, with unmatched granular security. **E-Class SRA EX9000, EX7000 and EX6000** appliances and virtual appliances are engineered to detect the identity and integrity of the endpoint device, protect enterprise resources with granular policy control and connect authorized users easily to mission-critical applications over all leading platforms from all leading devices, including iOS and Android devices. Easy to use and control, E-Class SRA provides a single enterprise-class solution for remote access, extranets, mobility, wireless, disaster recovery, policy control and Network Access Control (NAC).



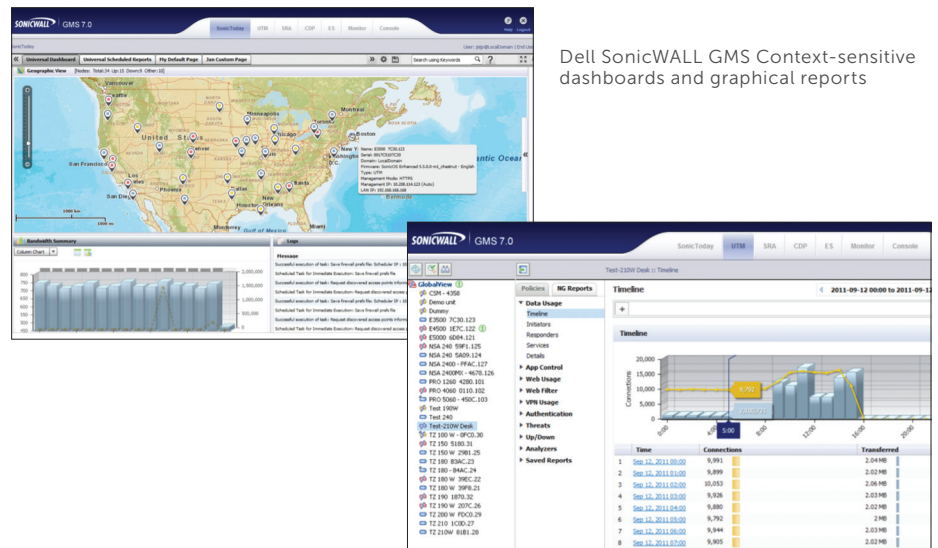
## Enterprise-class communications protection

Dell SonicWALL E-Class Email Security delivers highly scalable and effective inbound and outbound email protection, while reducing administrative overhead. Available as a software, appliance or virtual appliance solution, the Dell SonicWALL **E-Class Email Security Series** boosts productivity by stopping spam, virus and phishing attacks; supports regulatory compliance and corporate governance initiatives by detecting and blocking email data leaks; and adapts to any network configuration, whether centralized or highly distributed, through its proven split mode architecture. Dell SonicWALL E-Class Email Security Appliances (ESA) include the ESA ES6000 and the high-availability ESA ES8300 models.

## Enterprise-class management and reporting

Dell SonicWALL Global Management Solution (GMS) delivers the power of real-time policy-based monitoring, and real-time and historical reporting, with the flexibility to centrally deploy, configure and manage thousands of Dell SonicWALL network security appliances. Deployable as hardware, software or virtual appliance, E-Class GMS eases management of distributed enterprise networks with dispersed branch offices and remote sites, without the costs, complexity and risks associated with disparate software bundles.

Dell SonicWALL Scrutinizer is a multi-vendor, application traffic analytics visualization and reporting tool to measure and troubleshoot network performance utilization while increasing productivity for enterprises and service providers. Scrutinizer supports a wide range of third party routers, switches, firewalls, and data-flow reporting protocols, providing unparalleled insight into application traffic analysis from IPFIX/NetFlow data exported by Dell SonicWALL firewalls.



Dell SonicWALL GMS Context-sensitive dashboards and graphical reports

## Enterprise-class solutions: The E-Class Series

	Network security	Secure remote access
Threat protection	<ul style="list-style-type: none"> <li>Dell SonicWALL Next-Generation Firewall including RFDPI tightly integrates intrusion prevention, malware protection, and application intelligence and control with real-time visualization</li> <li>Utilizing Dell SonicWALL GRID Network, continuously updated signature database, scans all files of any size, protecting the network from malware to stop attacks before they enter the network</li> <li>The Dell SonicWALL GRID Network ensures that protection is always up-to-date through the real-time monitoring of worldwide threat activity</li> </ul>	<ul style="list-style-type: none"> <li>Robust End Point Control (EPC) interrogation of Windows®, Windows Mobile, Macintosh® and Linux® endpoint environments</li> <li>EPC identifies the endpoint and confirms policy criteria (like anti-virus updates or certificate-based watermarks) at user login, as well as at administrator-defined intervals, to ensure ongoing endpoint integrity</li> <li>SonicWALL Aventail E-Class SRA solutions supports Vasco, RSA, Active Directory, LDAP, RADIUS and ACE authentication, as well as One-Time Password (OTP) generation for two-factor authentication</li> </ul>
Scalability	<ul style="list-style-type: none"> <li>Highly scalable security and connectivity platform purpose-built for high-speed internal and external network protection, virtual private network (VPN) implementations and deployment flexibility</li> <li>A multi-core architecture designed for performance offers ultra high-speed threat protection and scalability</li> <li>Enterprise-class performance at wire speed with near-zero latency</li> </ul>	<ul style="list-style-type: none"> <li>Rapid set-up and web-based deployment of secure remote access to branch locations, home PCs, kiosks, PDAs, smartphones, tablets and unmanaged devices over wired and wireless networks</li> <li>Models supporting up to 20,000 concurrent users, featuring clustering for high availability (HA) using externally-sourced or internal integrated load balancing</li> <li>SonicWALL Aventail E-Class SRA solutions are easier than ever to deploy and manage with a more intuitive set-up wizard, simplified policy objects and streamlined activity monitoring</li> </ul>
Mobility	<ul style="list-style-type: none"> <li>Functions as a secure wireless switch and controller that automatically detects and configures Dell SonicWALL SonicPoint-N wireless access points for distributed network environments</li> <li>Provides secure and easy-to-use remote connectivity via IPsec or SSL VPN clients</li> <li>The Dell SonicWALL Mobile Connect™ unified client app for Apple iOS and Google Android devices deliver full network-level access to corporate resources over encrypted SSL VPN connections</li> </ul>	<ul style="list-style-type: none"> <li>Connect Mobile™ can provide access to a broad range of client/server and web-based applications from Windows Mobile and Google® Android-powered devices</li> <li>Access control and EPC ensure that the user and device is fully authorized before allowing access</li> <li>IT can add the security of mobile two-factor authentication or use client certificates as a device watermark to revoke access if the device is lost or stolen</li> <li>The Dell SonicWALL Mobile Connect™ unified client app for Apple iOS and Google Android devices deliver full network-level access to corporate resources over encrypted SSL VPN connections. EPC provides the ability to detect jailbroken iOS and rooted Android systems</li> </ul>
Compliance	<ul style="list-style-type: none"> <li>Content Filtering Service (CFS) integrated in the E-Class NSA provides organizations with greater control to block inappropriate, illegal and dangerous web content by leveraging a dynamic rating and caching architecture, thus eliminating the need for costly dedicated filtering services</li> <li>Application intelligence and control granular policy capabilities include restricting transfer of specific files and documents, blocking email attachments based on user-configurable criteria</li> </ul>	<ul style="list-style-type: none"> <li>Provides the granular policy controls needed to comply with Sarbanes-Oxley, HIPAA, Basel 2 and other regulatory requirements, while still providing remote access from unmanaged or managed devices, even during business disruptions</li> <li>Enhanced user monitoring features streamline auditing and troubleshooting of current and historical user activity</li> <li>Administrators can easily view or filter activity by user, time, throughput, realm, community, zone, agents or IP address</li> </ul>
Productivity	<ul style="list-style-type: none"> <li>Application intelligence and control granular policy capabilities control application usage, prioritize bandwidth based on application type</li> <li>CFS helps to restrict users from accessing web sites deemed unproductive for the business and prevents access to malicious web sites which can result in extensive downtime</li> </ul>	<ul style="list-style-type: none"> <li>Organizations can extend access and improve productivity to users leveraging mobile devices, providing a universal solution for remote access control, instead of only a niche solution just for mobile device email access</li> <li>Broader cross-platform support extends Connect Tunnel EPC and Advanced EPC functionality to Windows, Macintosh and Linux</li> </ul>
Disaster recovery/ business continuity	<ul style="list-style-type: none"> <li>Redundant hardware design with dual hot-swappable fans and power supplies protects against hardware failure</li> <li>Software redundancy comes in the form of stateful failover in either Active/Passive or Active/Active DPI High Availability (HA) deployments</li> </ul>	<ul style="list-style-type: none"> <li>Offers an intelligent, reliable solution for enterprise-class disaster recovery, whether triggered by a catastrophic event like a hurricane, or by something as simple as a regional power outage</li> <li>Employees can gain access from IT-managed devices via Connect Tunnel, or from non-managed devices via the WorkPlace portal</li> <li>Can be deployed in multiple geographic locations using policy replication</li> <li>Spike License pack allows temporary increases in SonicWALL Aventail E-Class SSL VPN license capacity in the event of a large scale business disruption</li> <li>Can be deployed in conjunction with Dell SonicWALL Continuous Backup and Recovery (CDP) for comprehensive business continuity protection</li> </ul>

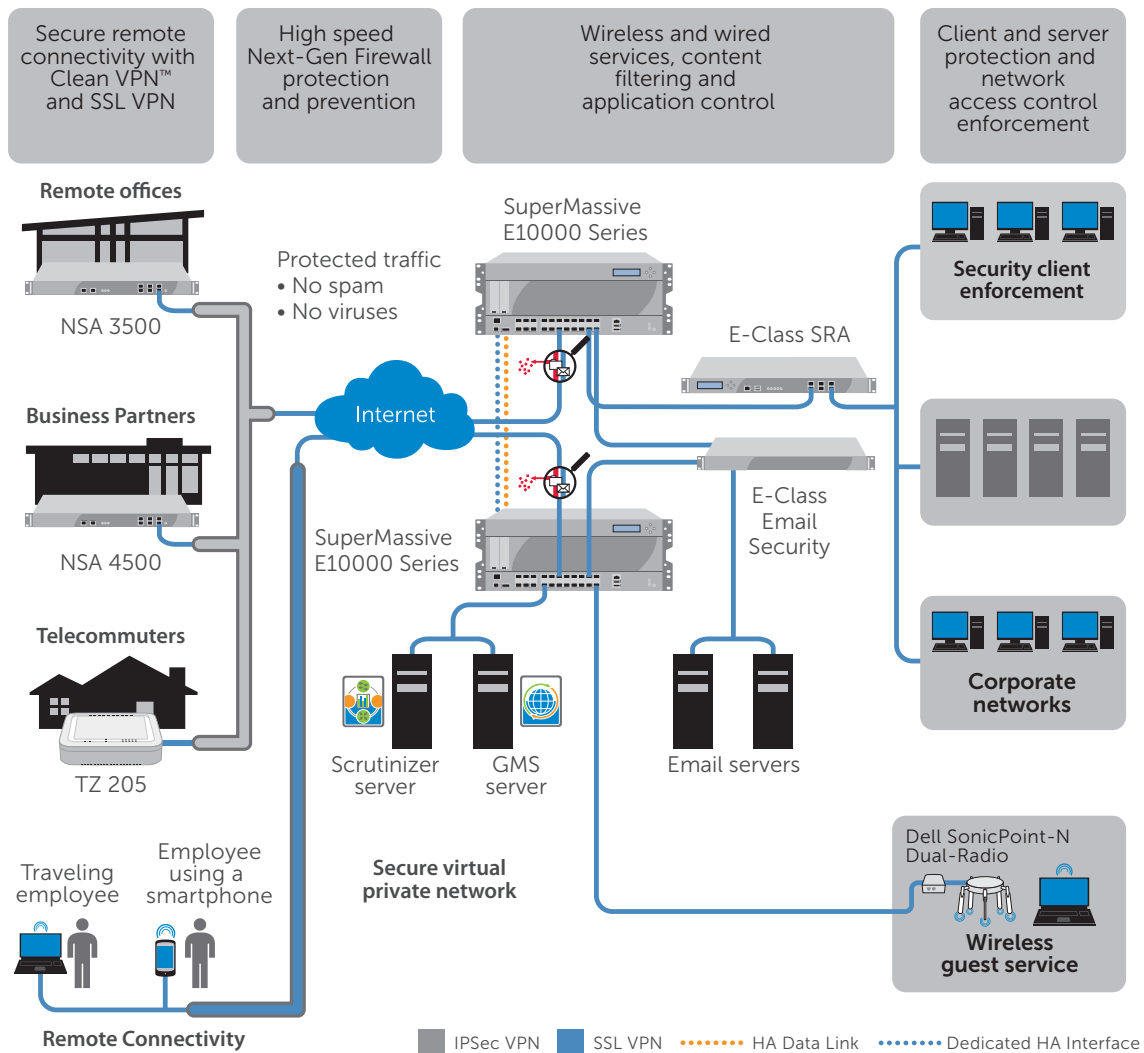
## Email security

## Management and reporting

Threat protection	<ul style="list-style-type: none"> <li>• Protects organizations from spam, phishing, virus, DHA and DoS email-based attacks</li> <li>• Dell SonicWALL GRID Network ensures signatures are always up-to-date through real-time monitoring of world-wide threat activity, providing the highest level of protection</li> <li>• Dell SonicWALL GRID Anti-Virus leverages Dell SonicWALL's anti-virus, anti-malware and anti-spyware technology to deliver regularly updated signature-based protection</li> </ul>	<ul style="list-style-type: none"> <li>• Dell SonicWALL GMS provides the tools to manage security policies and services throughout a large-scale multi-policy enterprise or service provider environment</li> <li>• Dell SonicWALL Scrutinizer provides powerful visualization and alerting to threats as they occur in real time as well as intuitive reporting on historic data</li> </ul>
Scalability	<ul style="list-style-type: none"> <li>• Dell SonicWALL Email Security can utilize a split mode configuration that has been proven to handle up to 100 million messages a day</li> <li>• Manages multiple systems centrally through one centrally through one "control center," which allows for unlimited scalability with minimal additional management overhead per additional system</li> <li>• Multi-system configurations can be software-based, appliance-based, virtual appliance-based or a combination of software, appliances and virtual appliance</li> <li>• Supports multiple LDAP servers and an unlimited number of domains, and allows flexible policy enforcement by user, group, domain, LDAP server or all system users</li> </ul>	<ul style="list-style-type: none"> <li>• Dell SonicWALL GMS is ideal for mid-to-large size enterprises and service providers that need to manage multiple Dell SonicWALL firewall, continuous data protection, email security and secure remote access devices</li> <li>• Dell SonicWALL Scrutinizer is ideal for mid-to-large size enterprises and service providers that need reporting on Dell SonicWALL and multiple third party devices across the network</li> </ul>
Mobility	<ul style="list-style-type: none"> <li>• Extends email security to corporate email received and sent over smartphones or tablet devices</li> </ul>	<ul style="list-style-type: none"> <li>• GMS Mobile Beta allows system administrators on the go to view and manage Dell SonicWALL appliances from their iPhone</li> <li>• Dell SonicWALL's Global Management System provides the ability to manage, monitor and report on Dell SonicWALL secure remote access/SSL VPN appliances across the network.</li> </ul>
Compliance	<ul style="list-style-type: none"> <li>• Enables organizations to create and enforce specific policies designed to ensure the highest level of compliance possible</li> <li>• Specifically, E-Class Email Security will actively prevent violation of compliance terms, prevent leaks of confidential data and private and sensitive information, and enforce all email usage policies</li> </ul>	<ul style="list-style-type: none"> <li>• Dell SonicWALL GMS allows for creation of customizable reports to meet internal and external regulatory compliance mandates</li> </ul>
Productivity	<ul style="list-style-type: none"> <li>• Enhances productivity with unsurpassed end-user controls such as an integrated Junk button for Outlook®, giving users to greater control of their inbox, relieving frustration and reducing calls to the IT help desk</li> <li>• Simplifies deployment and management</li> <li>• Updates of the latest threat outbreaks are automatically received and deployed every five minutes</li> <li>• Management reports can be scheduled and emailed</li> </ul>	<ul style="list-style-type: none"> <li>• Dell SonicWALL Application Traffic Analytics tools, such as GMS and Scrutinizer, provide powerful insight into bandwidth utilization, security threats and employee productivity</li> </ul>
Disaster recovery/ business continuity	<ul style="list-style-type: none"> <li>• Available as a software or virtual appliance solution, ideal for SAN deployments, or an appliance solution, with up to 2-5 times the storage of competitive appliances, Dell SonicWALL Email Security can be an integral part of an organization's email storage and retention policies.</li> </ul>	<ul style="list-style-type: none"> <li>• Dell SonicWALL's Global Management System provides the ability to manage, monitor, and report on Dell SonicWALL secure remote access/ SSL VPN appliances across the network</li> </ul>



## Deployment scenarios



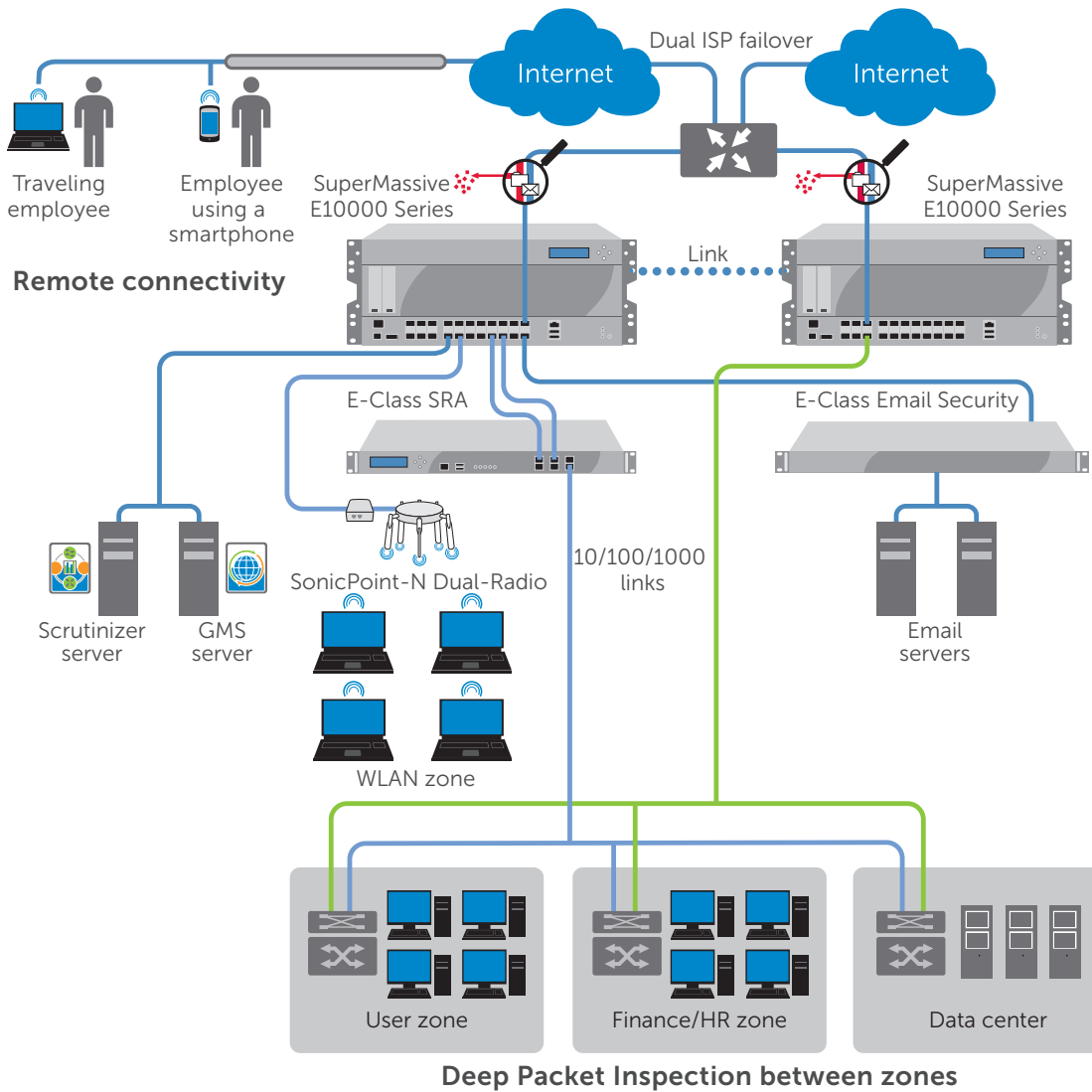
### Central-site/distributed

Dell SonicWALL E-Class solutions provide a high-speed scalable platform to meet the requirements of enterprise deployments such as network central-site gateways. Available as software, virtual appliance or appliances, E-Class Email Security can be deployed on a single device, or in split mode, utilizing multiple devices, all managed centrally

via a control center. The E-Class Series includes innovative Dell SonicWALL Clean VPN™ technology, which integrates network security and VPN technology to provide a defense-in-depth combination of high-performance real-time Next-Generation Firewall with granular application and endpoint remote access control. Additionally, SonicWALL Aventail Smart Tunneling™ provides granular

bidirectional access control for back-connect applications like VoIP and remote help desk. The deployment of E-Class GMS as software, a hardware appliance and/or virtual appliance means administrators can configure and manage their secure remote access solution and their network security solution all from a single management interface.





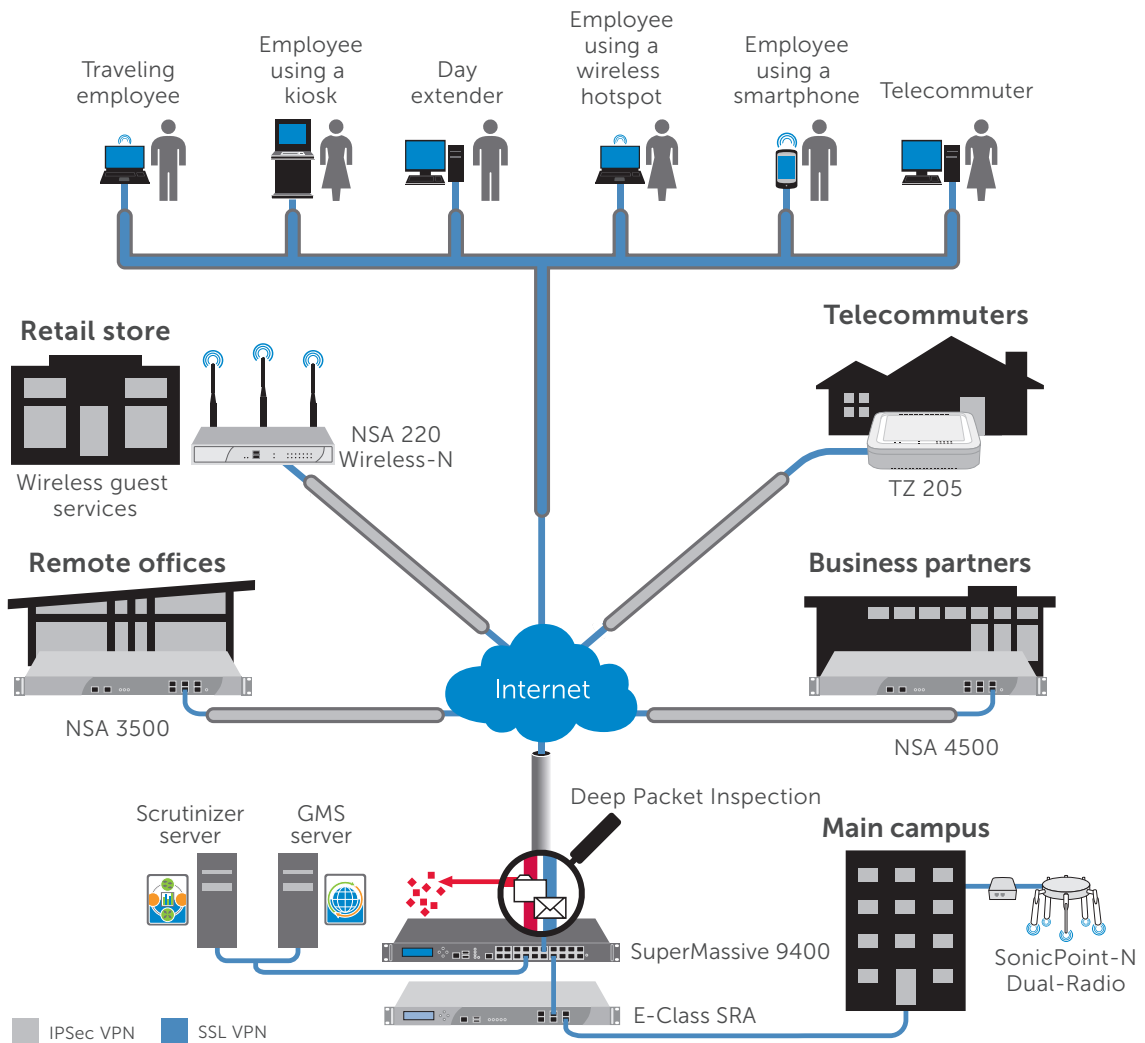
### Campus

In campus environments, Dell SonicWALL E-Class provides administrators with total control over zone-level policy and resource access for both wired and wireless users. Additionally, E-Class

Secure Remote Access can securely connect laptops, tablets, smartphones and other IT-managed or unmanaged devices over wired and wireless campus networks environments. Dell SonicWALL Scrutinizer provides powerful insight with

application traffic analytics that visually display network bandwidth utilization, eases troubleshooting and alerts administrators of security threats.

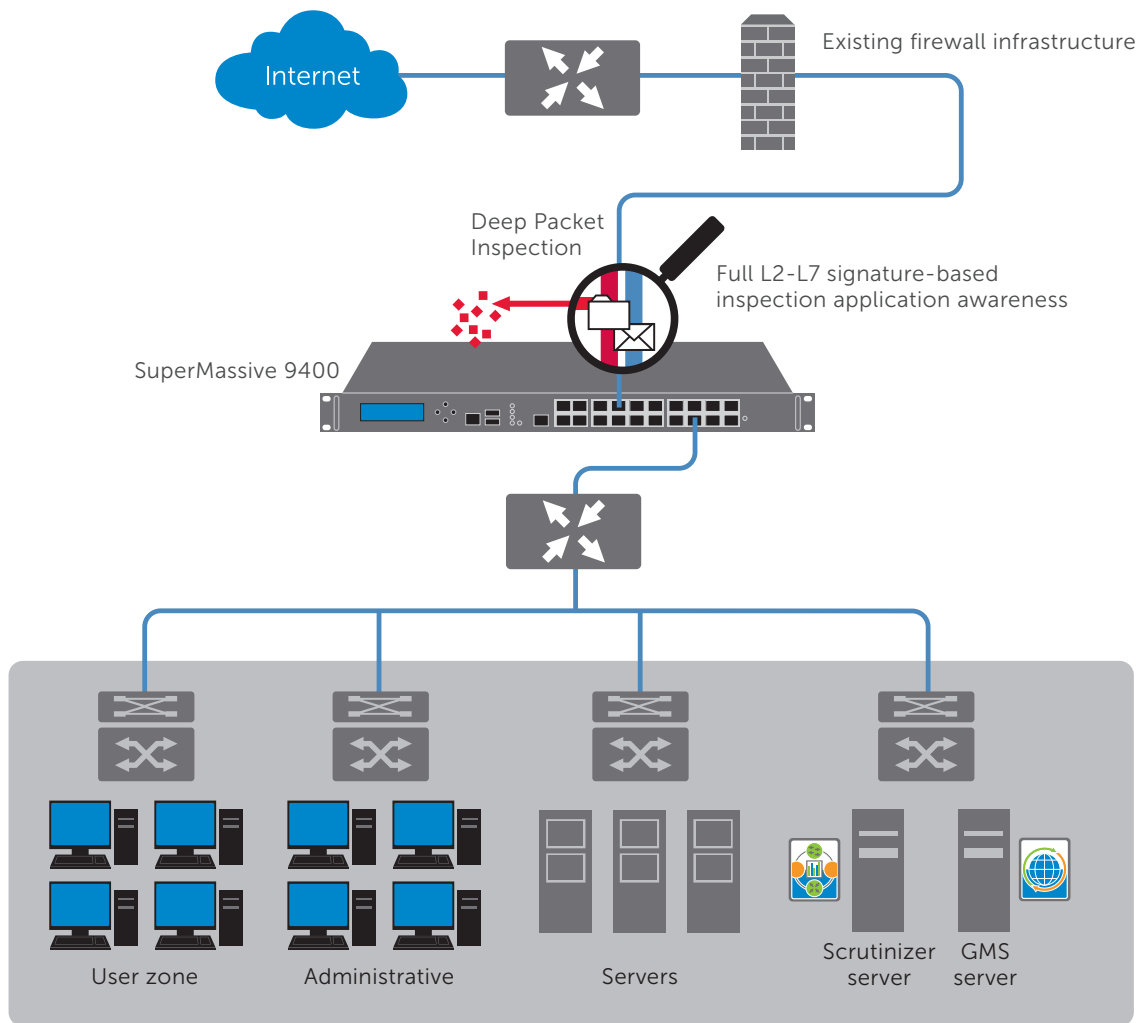
## Deployment scenarios



### Remote deployment

SSL VPN technology provides transparent access to network resources from any network environment or devices, providing employees and authorized partners, suppliers or customers with extranet access to key resources. Integrated IPSec VPN connectivity

provides a secure solution for site-to-site connectivity between branch offices, remote locations and headquarters. E-Class SRA offers Connect Tunnel Service Edition for secure automated application-to-application connectivity, such as regularly scheduled branch-to-headquarters data uploads.



### In-line deployment

When deployed in Layer 2 bridge mode, E-Class NSA can provide inline intrusion detection and prevention, add security to network segments or business units and simplify layered security. When deployed

as an inline solution, the E-Class NSA allows administrators to leave their existing infrastructure intact and add application intelligence and control as an extra layer of security and visibility to their network.

## Leadership

Since 1991, Dell SonicWALL has provided tens of millions of users with easy-to-use, superior quality, and high-performance appliances and services, hailed by industry publications and analysts such as Gartner, Information Security, Network World and SC Magazine.

Dell SonicWALL maintains strategic relationships with industry-leading partners and resellers, with qualified, customer-focused resellers and distributors delivering our award-winning solutions worldwide. Offering comprehensive 24x7 support, consulting and design services, technical training and certification courses, Dell SonicWALL helps organizations of all sizes to more effectively plan, deploy and manage their security infrastructures.

Dell SonicWALL continually dedicates its ongoing vision and resources to keep our customers' network and data protection solutions ahead of ever-evolving threats. Dell SonicWALL employs the industry's finest team of security and data protection professionals, devoted to providing innovative solutions for integrated network security, secure remote access, web and email security, backup and recovery, and policy and management.

## Conclusion

Increasingly, customers every day see Dell SonicWALL as the partner who understands the technology, business, social and security challenges ahead. They see that Dell SonicWALL has the long-term vision to meet these challenges and deliver on it with an innovative technological and business approach that drives the cost and complexity out of building and running

secure infrastructures.

Dell SonicWALL's financial, operational and technological excellence make it the right partner to help you secure greater productivity, IT efficiency and your business.

For more information on Dell SonicWALL E-Class solutions, please visit [www.sonicwall.com](http://www.sonicwall.com).